

Elemental Analysis

Inductively Coupled Plasma- Optical Emission Spectrometer



Model: iCAP7600Duo

Make: Thermo Fisher Scientific, USA

Application: Trace elemental analysis in ppm/ppb level in ores, minerals, metals, water, liquids & other samples.

Parameters	Industries/Institutions	Students & Research Scholars
Per Element (For Testing)	Rs. 1650	Rs. 825
For Microwave Digestion (Per Sample)	Rs.1850	Rs. 925

Optical Emission Spectrometer



Model: S7ATLANTIS

Make: GNR, Italy

Application: Used for elemental analysis of Metals.

Parameters	Industries/Institutions	Students & Research Scholars
All elements per sample	Rs. 1050	Rs. 525

CHNS Analyser



Model: Vario Macro Cube

Make: Elementar Analysensysteme GmbH, Germany

Application: Determines the Carbon, Hydrogen, Nitrogen and Sulphur concentration (Ultimate analysis) in Coal, Coke etc.

Parameters	Industries/Institutions	Students & Research Scholars
C, H, N & S (all four parameters per sample)	Rs. 2850	Rs. 1425

C-S Analyser



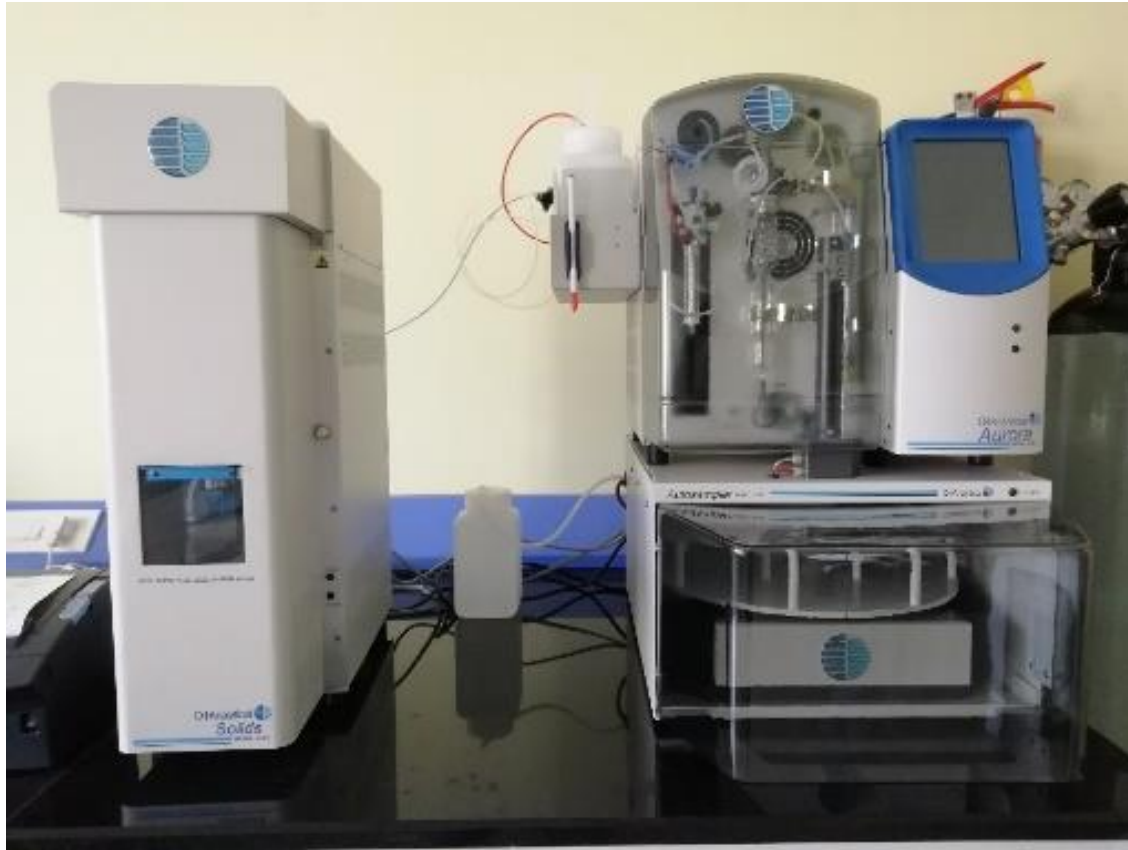
Model: CS-800

Make: ELTRA GmbH, Germany

Application: Determination of Carbon & Sulphur in in-organic samples.

Parameters	Industries/Institutions	Students & Research Scholars
Carbon & sulphur (all two parameters per sample)	Rs.2850	Rs.1425

TOC Analyser



Model: TOC-1030W

Make: OI Analyticals, USA

Application: Measures the amount of organic, inorganic, or total carbon in water, aluminate liquor, waste water, sewerage water samples etc.

Parameters	Industries/Institutions	Students & Research Scholars
OC, IC & TOC (Per sample)	Rs. 1850	Rs. 925

UV Spectrometer



Model: Lambda A365

Make: Perkin Elmer, USA

Application: Quantitative determination of elements in water, metals, non-metals by calorimetry.

Parameters	Industries/Institutions	Students & Research Scholars
Per sample (each element)	Rs. 1750	Rs. 875